

# BestRest Products, LLC

6908 - 220th St. SW

Mountlake Terrace, WA 98043

(425) 673-1023

fax(425) 673-0502

<http://www.bestrestproducts.com>  
e-mail: [bestrestproducts@aol.com](mailto:bestrestproducts@aol.com)

## R12GS SkidPlate Fits the following models: BMW R1200GS

Thank you for purchasing a BestRest R12GS SkidPlate! If you have problems with installation or operation of this product please call us at the number on the letterhead.

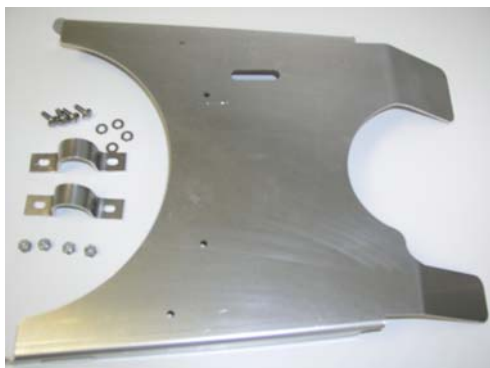
May the Lord God watch over you and keep you safe as you travel the world on your motorcycling adventures. Ride Safe and God Bless! ~ David & Judy Petersen

Tools needed for installation:

- 1 - slotted screwdriver
- 1 - 10 mm wrench (or) 3/8" wrench

Inspect your package. It should contain:

- 1 - R12GS SkidPlate
- 2 - U-clamps
- 4 - 10-32 truss head screws
- 4 - 10-32 nylon locknuts
- 4 - #10 flat washers



The R12GS SkidPlate is designed to protect the underside of your center stand, your catalytic converter (or other exhaust collector), and the underside of the transmission.

Upon contact with a log, rock, or other obstacle, the SkidPlate's tapered design and formed edges prevent rearward or lateral movement of the plate. Under most conditions, the motorcycle will easily slide off the obstacle with no damage to the motorcycle. (Please don't use this as an excuse to go rock bashing!)

### INSTALLATION

1. Place the motorcycle on the center stand. Make sure it's properly balanced and won't tip or fall, because you'll be working under the motorcycle.
2. Clean the center stand of all foreign material.
3. Place the SkidPlate on the front of the center stand. The bent long edges point toward the REAR of the motorcycle. The two

large bent tabs will point UP when the center stand is down.



4. The outer edges of the SkidPlate wrap around the outer tubes of the center stand.

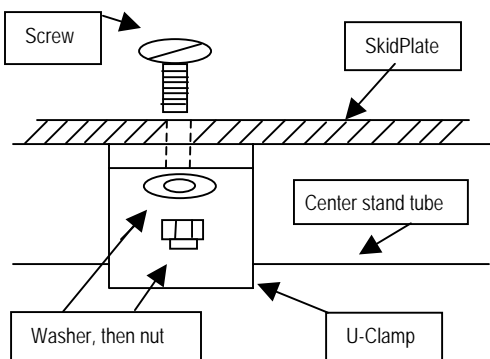
5. The bottom of the SkidPlate will be above the feet of the center stand, and above the side foot lever.

6. Proper vertical alignment is achieved when the SkidPlate is as far down on the center stand as possible. Note that as you push the SkidPlate down, it wedges itself onto the tubes of the center stand. This is normal and is part of the structural design.

7. Place the screws through the holes in the SkidPlate. Do not use a washer under the head of the screw.

8. From the rear, place the U-clamps over the cross tubes and onto the screws.

9. Place a washer on each screw, followed by a locknut. Tighten loosely. Sketch shows placement of screws, clamps, washers, and nuts. Front of motorcycle is UP in this sketch.



10. Check alignment. The SkidPlate should be resting flat against the tubes of the center stand, and should be as far down as the clamps will allow. Next photos show the correct configuration of the clamps:



Left clamp



Right clamp

12. Take the motorcycle off the center stand and place it on the side stand.

13. From both sides of the motorcycle, check that the center stand retracts completely, and that the SkidPlate is not in contact with the frame, the center stand spring, the exhaust pipe, or other parts of the motorcycle.



14. Correct any misalignment as required.

15. Place the motorcycle back on the center stand and tighten all screws and nuts completely.

Note that the U-clamps will not necessarily lie flat on the back surface of the SkidPlate. All that matters is that the nuts are equally tight.

Installation is complete!

Maintenance is not normally required. Occasionally check that the screws and nuts have not come loose.

As part of your regular maintenance and inspection before each ride, check that the SkidPlate hasn't shifted to one side and come in contact with any part of the exhaust system or other frame members. Adjust if required.

When washing the motorcycle, hose off any accumulations of dirt or mud that may have collected on the backside of the SkidPlate.

Over time the SkidPlate will develop a "patina", caused by flying gravel, road debris, rocks, sticks, etc. This is normal and is evidence of the protection afforded by the SkidPlate. It also shows other riders that you've been out there in the bush!